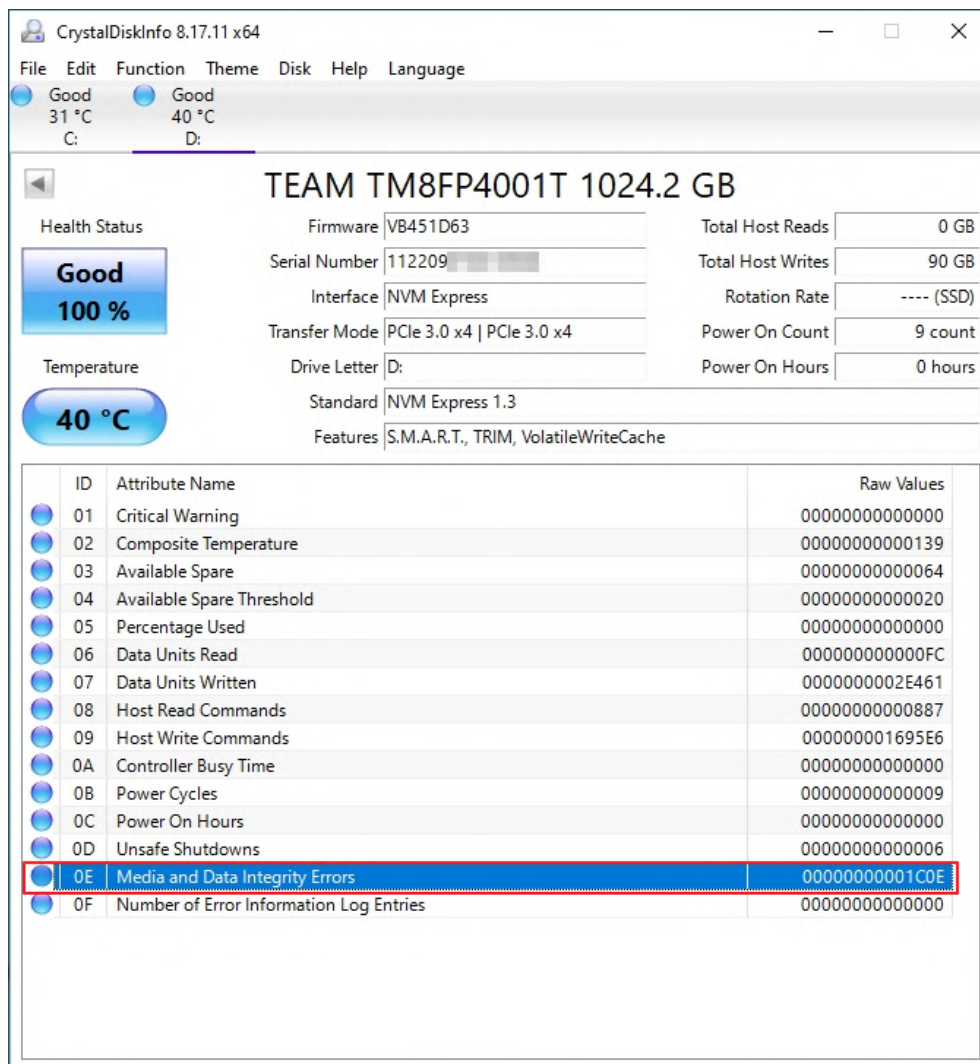


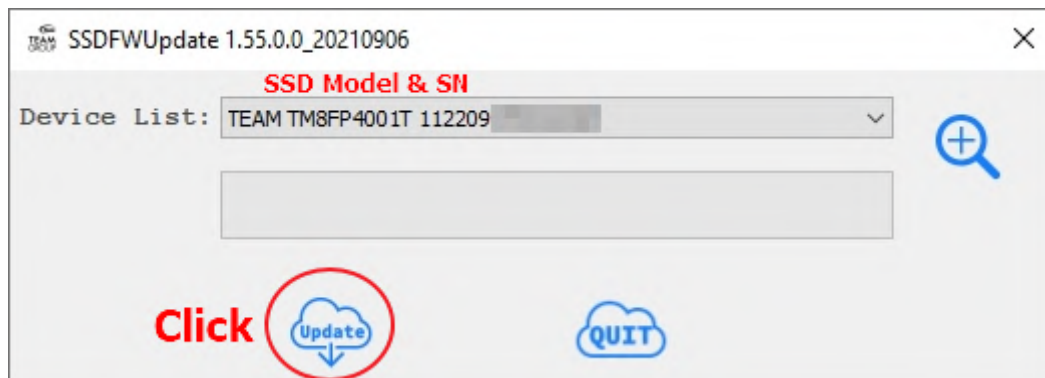
**Step 1.** MP34 Model 1TB or 2TB info, The SMART 0E raw value has increased.



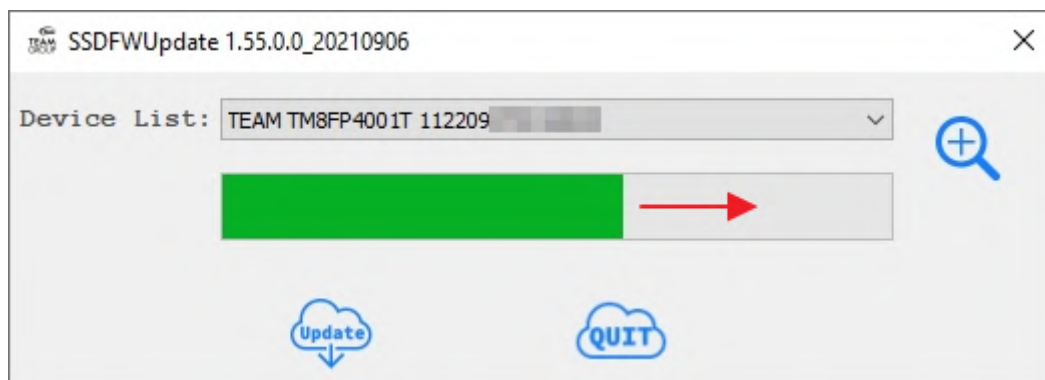
**Step 2.** Double Click the SSDFWUpdate tools (this tools For MP34 1TB & 2TB)



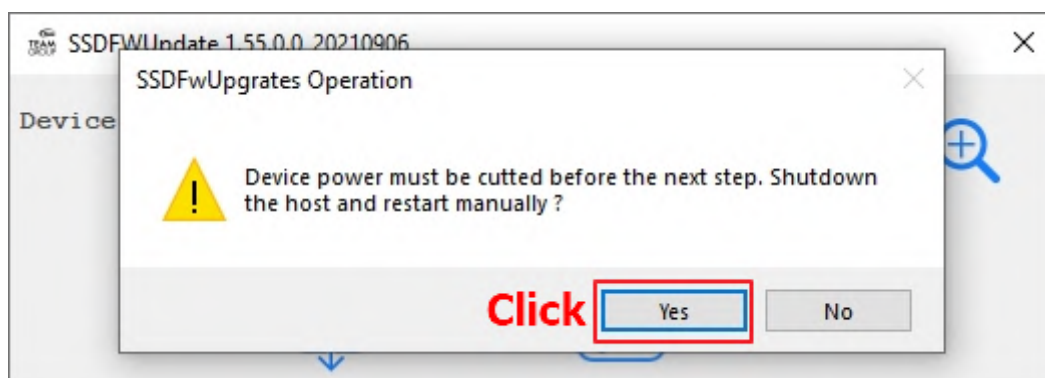
**Step 3.** Confirm the device list “SSD Model & SSD SN”, if OK, please click “Update”



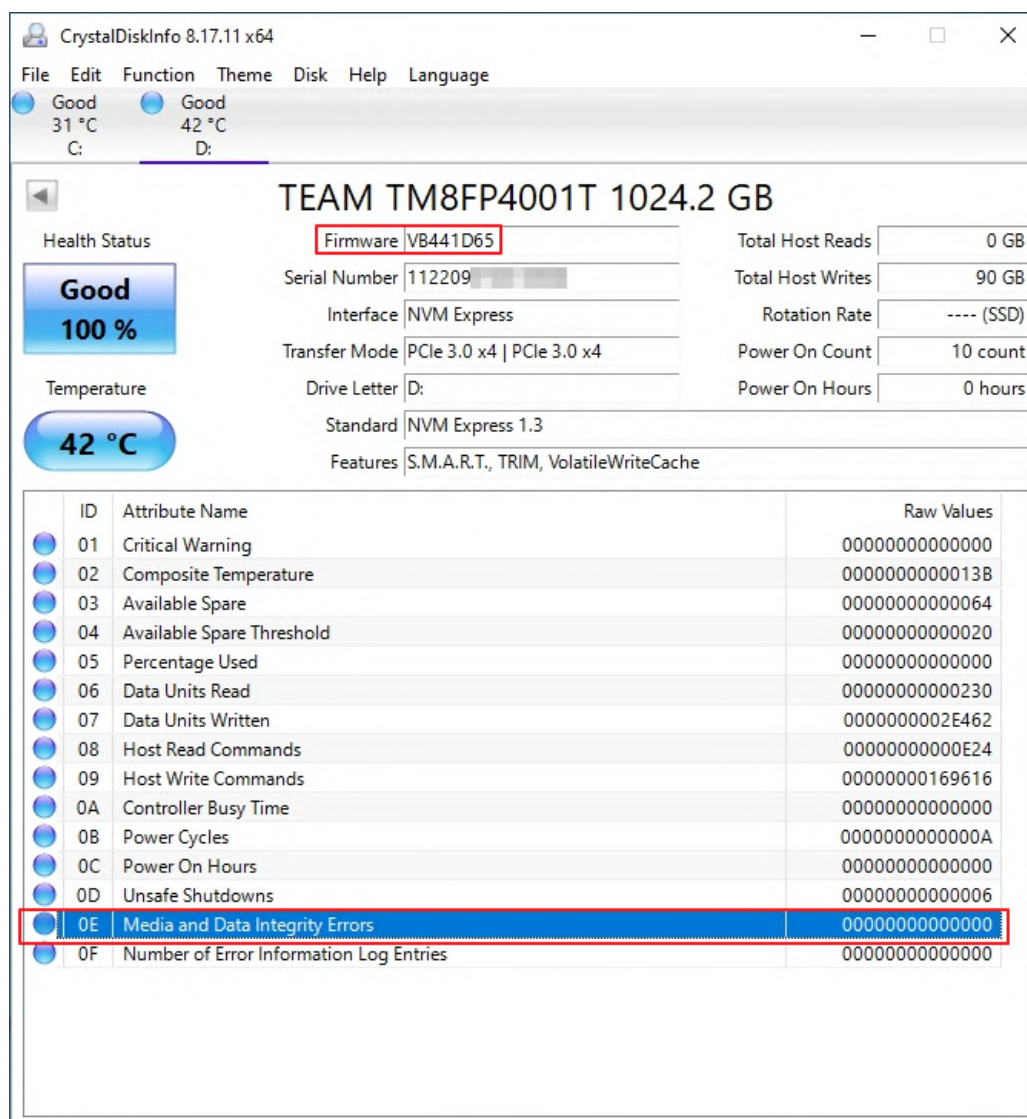
**Step 4.** FW Update~



**Step 5.** Please Shutdown & Re-boot your PC



**Step 6.** After re-boot PC , you can check the SSD info (FW Ver.VB441D65 & SMART 0E raw value is set to zero.)



MP34 1TB Update SSDFW TEST Platform	
CPU	i7-12700K
Motherboard	ASUS Z690M-PLUS D4 CSM
BIOS Ver.	2014
Memory	DDR4-2400 4GBx2
VGA	Onboard